

# WORLABY NEIGHBOURHOOD PLAN

Strategic Environmental  
Assessment Screening Opinion  
and  
Habitats Regulations  
Assessment  
Screening Report

FEBRUARY 2018

**Undertaken By North Lincolnshire Council Spatial Planning Team,  
Civic Centre, Scunthorpe, North Lincolnshire, DN16 1AB**



# Contents

1 NON-TECHNICAL SUMMARY.....	5
<i>Summary of the Screening Opinion for the Worlabby Neighbourhood Plan</i> .....	6
2 INTRODUCTION.....	7
<i>The 'Screening' Process</i> .....	7
<i>Significant environmental effects of a draft neighbourhood plan</i> .....	8
<i>Worlabby Neighbourhood Plan Area</i> .....	8
3 BACKGROUND.....	9
<i>Summary of the Worlabby Neighbourhood Plan issues and themes</i> .....	9
4 ASSESSMENT.....	10
<i>Statutory Consultees</i> .....	10
<i>Environment Agency</i> .....	10
<i>Historic England</i> .....	10
<i>Natural England</i> .....	11
<i>Responses to Consultation Comments Received for the Screening Opinion of the Worlabby Neighbourhood Plan</i> .....	12
<i>Assessment 1: Establishing the Need for a Strategic Environmental Assessment of the Worlabby Neighbourhood Plan</i> .....	13
<i>Assessment 2: Likely Significant Effects on the Environment of the Worlabby Neighbourhood Plan</i> .....	14
5 Habitats Regulations Assessment (HRA) Screening Opinion for the Worlabby Neighbourhood Plan.....	17
<i>Introduction</i> .....	17
<i>Legislative Basis</i> .....	17
<i>Assessment</i> .....	18
<i>Conclusions</i> .....	18
<i>Conclusions and Recommendations of the Screening Assessments</i> .....	18
6 Appendices.....	20
<i>Appendix 1 - Key steps of the Neighbourhood Plan SEA Screening Process:</i> .....	21
<i>Appendix 2 - Strategic Environmental Assessment process:</i> .....	22
<i>Appendix 3 - Government guidance 'A practical guide to the Strategic Environmental Assessment Directive' sets out the following approach to be taken in determining whether SEA is required:</i> .....	23
<i>Appendix 4 - Consultation Comments Received from Statutory Bodies:</i> .....	24
1) <i>Environment Agency (letter):</i> .....	24
2) <i>Historic England (letter):</i> .....	25
3) <i>Natural England (email):</i> .....	27

**NOTE TO QUALIFYING BODY:**

**This document should be read in conjunction with 'Strategic Environmental Assessment - Background Information for Qualifying Bodies' (North Lincolnshire Council, September 2016)**

# 1 NON-TECHNICAL SUMMARY

- 1.1 A Strategic Environmental Assessment (SEA) is required under European legislation for all plans that may have a significant effect on the environment. This particularly relates to plans that designate sites for development such as a Local Plan or Neighbourhood Plans produced by a town or parish council.
- 1.2 The purpose of SEA is to provide a high level of protection of the environment and to integrate considerations of the environment into the preparation and adoption of plans with a view to promoting sustainable development.
- 1.3 The SEA process sets out criteria for assessing the significance of the impact of a plan on the environment. If a significant effect is possible, the assessment requires the consideration of options and the evaluation of the potential environmental effects.
- 1.4 To ascertain if SEA is required, a “screening” exercise is undertaken which looks at the proposals in a Neighbourhood Plan to see if a significant effect is likely. The criteria for doing this are set out in the relevant legislation.
- 1.5 A Habitats Regulations Assessment (HRA) is a process that looks at the potential impact of proposals within a plan on internationally designated wildlife sites. For the purpose of the HRA, internationally designated wildlife sites are Special Protection Areas (SPAs), Special Areas of Conservation (SACs) and Ramsar wetland sites.
- 1.6 This report details the assessment of the Worlaby Neighbourhood Plan against the need for an SEA or HRA to be produced to accompany the Plan. The three statutory consultees were consulted to invite their views on its contents: Environment Agency; Historic England; and Natural England. The results of the consultation are included in the report and a formal screening opinion has been issued to Worlaby Parish Council indicating the outcomes of the screening stage.
- 1.7 The result of this initial screening is that an Environmental Report covering the requirements of the SEA Directive IS REQUIRED to accompany the Worlaby Neighbourhood Plan, and that a Habitats Regulations Assessment is NOT REQUIRED.

## Summary of the Screening Opinion for the Worlaby Neighbourhood Plan

<b>Local Authority Details</b>	
<b>Name and job title of officer undertaking screening opinion</b>	<i>Dave Lofts, Senior Planning Officer, North Lincolnshire Council</i>
<b>Date of initial assessment</b>	<i>24/10/2017</i>
<b>Conclusion of assessment</b>	<ul style="list-style-type: none"> <li><i>i that an Environmental Report covering the requirements of the SEA Directive <b>IS REQUIRED</b>; and</i></li> <li><i>ii (That an Habitats Regulations Assessment is <b>NOT REQUIRED</b>.</i></li> </ul>
<b>Reason for conclusion</b>	<ul style="list-style-type: none"> <li><i>i The Screening Opinion Assessments demonstrate that SEA is necessary;</i></li> <li><i>ii To provide evidence and justification that the Worlaby Neighbourhood Plan has evolved with sustainability at the forefront of its preparation, a key consideration in the National Planning Policy Framework; and</i></li> <li><i>iii Proposals within the Plan will not adversely affect any internationally designated wildlife sites.</i></li> </ul>
<b>Name and job title of officer approving screening opinion</b>	<i>Chris Barwell, Spatial Planning Manager, North Lincolnshire Council</i>
<b>Date of approval</b>	<i>31/10/2017</i>

# 2 INTRODUCTION

## The 'Screening' Process

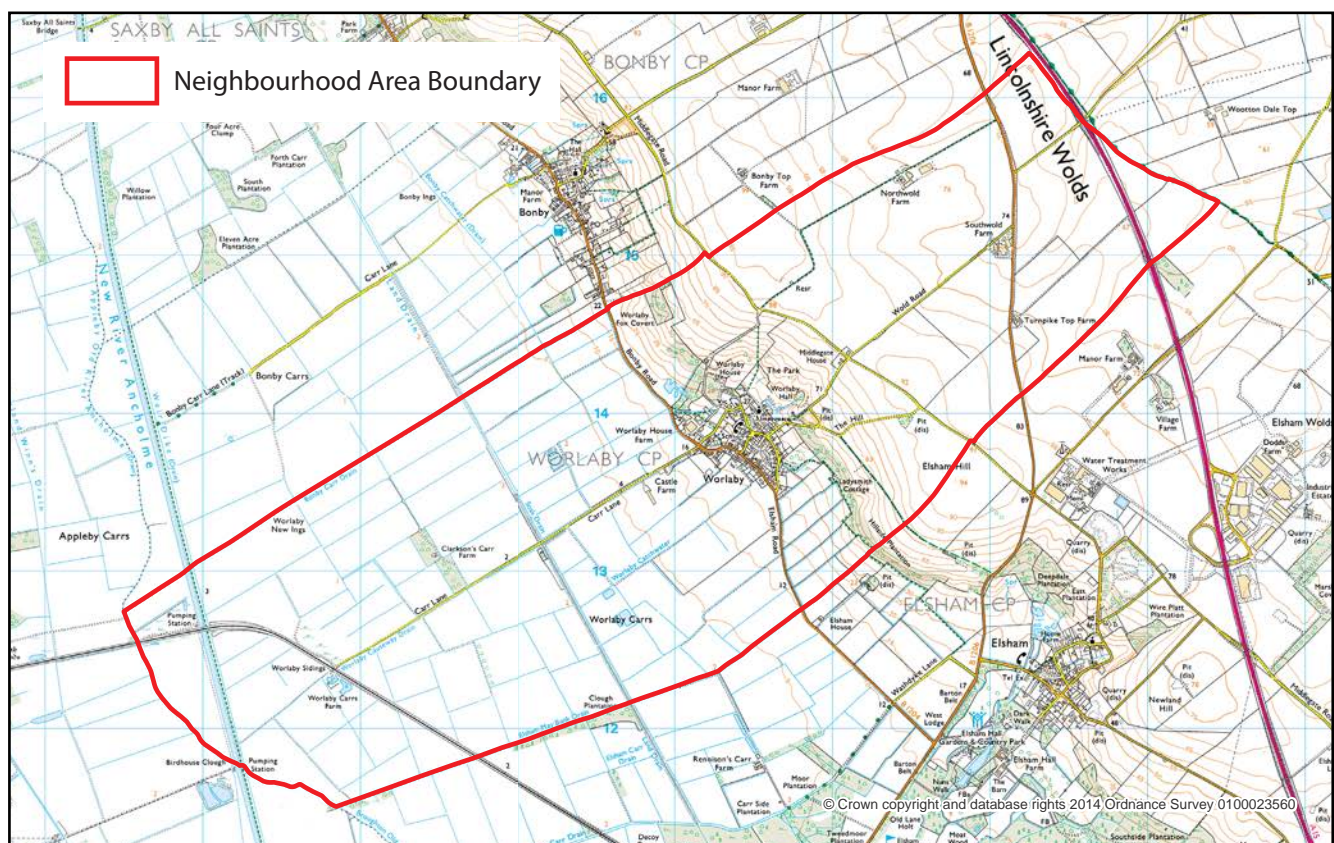
- 2.1 A Strategic Environmental Assessment (SEA) is required under European legislation for all plans that may have a significant effect on the environment. This particularly relates to plans that designate sites for development such as a Local Plan or Neighbourhood Plans produced by a town or parish council.
- 2.2 The SEA process sets out criteria for assessing the significance of the impact of a plan on the environment. For example, housing development proposed in a plan could have an impact on the wildlife of the area or have an impact on landscape. If a significant effect is possible the assessment requires the consideration of options and the evaluation of the potential effects on the environment.
- 2.3 This screening report determines whether the Worlaby Neighbourhood Plan requires a Strategic Environmental Assessment (SEA) in accordance with the European Directive 2001/42/EC and associated Environmental Assessment of Plans and Programmes Regulations 2004. These require SEA to be undertaken on any land use plan or programme which 'sets the framework for future development consent of projects'.
- 2.4 The key to the screening decision is the determination of whether the Worlaby Neighbourhood Plan is likely to have significant environmental effects, using the criteria set out in Annex II of the Directive and Schedule 1 of the 2004 Regulations. Consultation responses from the statutory bodies have been considered and incorporated into the report.
- 2.5 Whilst this document specifically assesses the environmental implications of the Worlaby Neighbourhood Plan reference should also be made to the generic document 'Strategic Environmental Assessment Background Information for Qualifying Bodies' which explains the background to Strategic Environmental Assessment process for town and parish councils or neighbourhood forums. The diagram in Appendix 1 outlines the key steps that have been followed during the SEA Screening Process of the Worlaby Neighbourhood Plan.
- 2.6 Paragraph 167 of the National Planning Policy Framework advises that assessments should be proportionate and should not repeat policy assessments that have already taken place. Both the North Lincolnshire Core Strategy DPD (June 2011) and the North Lincolnshire Housing & Employment Land Allocations DPD (March 2016) were subject to extensive Sustainability Appraisals incorporating Strategic Environmental Assessments.
- 2.7 Habitats Regulations Assessment (HRA) is a process that looks at the potential impact of proposals within a plan on internationally designated wildlife sites. For the purpose of the HRA, internationally designated wildlife sites are Special Protection Areas (SPAs), Special Areas of Conservation (SACs) and Ramsar wetland sites. The initial stage of the HRA process involves consideration of the reasons for designation and the conservation objectives of each internationally designated wildlife site within a reasonable distance of the Neighbourhood Plan Area and the potential impact of the proposals within the Plan on these.

## Significant environmental effects of a draft neighbourhood plan

2.8 The process of carrying out an SEA on the Worlaby Parish Neighbourhood Plan will form part of the evidence base for the Plan and can be an important tool in the plan making process. There are four main themes:

- social progress which recognises the needs of everyone;
- effective protection of the environment;
- prudent use of natural resources; and
- maintenance of high and stable levels of economic growth and employment.

## Worlaby Neighbourhood Plan Area





# 3 BACKGROUND

- 3.1 National Planning Practice Guidance advises that a Neighbourhood Development Plan should be screened early. Although policies that will shape the future of the parish are still evolving and developing, the Worlaby Neighbourhood Plan has been environmentally screened based on the following issues and themes that have developed from extensive public engagement and consultation. These in turn evolved from a Vision for the parish that also came out of that consultation process and was further developed by the Steering Group. Following the drafting of land use policies a further consultation will be held to enable the needs and aspirations of the local community to be reflected in the Pre-Submission version of the Plan.

## Summary of the Worlaby Neighbourhood Plan issues and themes

- 3.2 Following public consultation exercises the following objectives have evolved and are to be addressed by the Neighbourhood Plan. They will be written into planning policies to guide development in the parish:

### **Village Envelope and Design Principles**

*To protect the character of the landscape setting of the village and to manage the impacts of any future growth on the landscape separating the village from adjacent areas. To protect the character and identity of the landscape setting of the village and to maintain a visual and spatial distinction between adjoining settlements.*

### **Housing**

*To ensure that new housing meets local needs, in particular the need for downsizing, and that all new buildings are sympathetic to the scale, topography and character of the village. New houses are to be sympathetic to the scale, massing and character of the village and will not have a detrimental impact on the setting.*

### **Transport and movement**

*To ensure that new roads are integrated into existing routes to minimise traffic issues and provide desire-line access for pedestrians to existing centres.*

### **Green Links**

*To maintain and expand public access to the surrounding countryside as a recreation and leisure amenity for all residents and visitors. To improve and promote pedestrian access within the village with emphasis on connecting new and existing housing areas with each other, having regard to desire-line routes.*

### **Green space**

*To protect, enhance and expand green open space within the settlement area.*

### **Community**

*To provide additional community amenities, where needed, to reinforce a shared identity and purpose in the community.*

### **Employment**

*To protect existing rural employment and plan for future growth of rural employment*

# 4 ASSESSMENT

## Statutory Consultees

4.1 The initial Screening Opinion was sent to the three statutory consultees (Environment Agency, Historic England, and Natural England) on 3rd November 2017 to invite their views on its contents. The results of the consultation form part of the final assessment, and a formal screening opinion will be issued to Worlabby Parish Council indicating the outcomes of the screening stage and including the consultation comments and North Lincolnshire Council's responses to those consultation comments.

4.2 A complete response from each of the three statutory bodies can be found in Appendix 4 of this document. A summary of the consultations comments is as follows:

### *Environment Agency*

4.3 Consider that the Worlabby Neighbourhood Plan is unlikely to have significant environmental effects in terms of the issues within their remit. They do not, therefore, wish to request that an SA/SEA is carried out. The plan area includes a stretch of the River Ancholme; there is potential for minor environmental effects should the plan propose development along the watercourse.

### *Historic England*

4.4 For the purposes of consultation on SEA Screening Opinions, Historic England confines its advice to the question, "Is it likely to have a significant effect on the environment?" in respect of cultural heritage. Comments are based on the information supplied with the screening request.

4.5 The preparation of a Strategic Environmental Assessment at a level commensurate with the plan is likely to be required since, in the absence of a draft NP, it is not clear how any housing and/or employment sites to be allocated in the NP will impact on cultural heritage.

4.6 It is not clear how any impact has been assessed in respect of heritage assets, designated or non-designated, including potential non-designated heritage assets of archaeological interest.

4.7 The views of the other statutory consultation bodies should be taken into account before the overall decision on the need for a SEA is made.

4.8 If a decision is made to undertake an SEA, Historic England has published guidance on Sustainability Appraisal/Strategic Environmental Assessment and the Historic Environment that is relevant to both local and neighbourhood planning.

- 4.9 Should it be agreed that an SEA is required Historic England would be pleased to input to scoping parameters as part of a further consultation. They also have guidance on site assessment methodology which may be of use to the Worlaby NP team and Parish Council.
- 4.10 Depending on the scale and location of any allocation sites, it may be prudent to screen the draft NP itself at a later stage rather than head to scoping. Clearly, that would be an issue for the Worlaby NP group to consider and make a decision on, but it is suggested by Historic England as an alternative option.

### *Natural England*

- 4.11 Natural England broadly concurs with the conclusions of the assessment, based on the information provided.
- 4.12 However, the plan is at an early stage and the precise nature of the proposals in the plan are not yet clear. Should significant proposals come forward in a future version of the plan then they may revise their advice that the plan is unlikely to have significant environmental effects insofar as their strategic environmental interests are concerned.
- 4.13 They are not aware of significant populations of protected species that are likely to be affected by the policies or proposals within the plan. The responsible authority should provide information supporting this screening decision, sufficient to assess whether protected species are likely to be affected.
- 4.14 Natural England does not routinely maintain locally specific data on all potential environmental assets. As a result the responsible authority should raise environmental issues that have not been identified on local or national biodiversity action plan species and/or habitats, local wildlife sites or local landscape character, with its own ecological and/or landscape advisers, local record centre, recording society or wildlife body on the local landscape and biodiversity receptors that may be affected by this plan before determining whether an SEA is necessary.
- 4.15 Natural England reserves the right to provide further comments on the environmental assessment of the plan beyond this SEA screening stage, should the responsible authority seek views on the scoping or environmental report stages. This includes any third party appeal against any screening decision.

## Responses to Consultation Comments Received for the Screening Opinion of the Worlaby Neighbourhood Plan

Statutory Consultee	Response to Comments
Environment Agency consulted on 03/11/2017, replied on 27/11/2017	<ul style="list-style-type: none"> <li>• It is noted that the Plan is unlikely to have significant environmental effects.</li> <li>• The plan area includes a stretch of the River Ancholme; it is noted that there is potential for minor environmental effects should the plan propose development along the watercourse.</li> </ul>
Historic England consulted on 03/11/2017 replied on 27/11/2017	<ul style="list-style-type: none"> <li>• Screening Report amended to conclude that the preparation of a Strategic Environmental Assessment at a level commensurate with the plan is likely to be required.</li> <li>• of a Strategic Environmental Assessment at a level commensurate with the plan is likely to be required.</li> <li>• It is noted that Historic England has published guidance on Sustainability Appraisal/Strategic Environmental Assessment and the Historic Environment that is relevant to both local and neighbourhood planning.</li> <li>• It is noted that Historic England would be pleased to input to scoping parameters as part of a further consultation and that guidance on site assessment methodology can be made available for Worlaby NP/ Parish Council.</li> <li>• It is noted that it may be prudent to screen the draft NP at a later stage rather than head to scoping.</li> </ul>
Natural England consulted on 03/11/2017, replied on 04/12/2017	<ul style="list-style-type: none"> <li>• It is noted that, should significant proposals come forward in a future version of the plan, NE may revise their advice that the plan is unlikely to have significant environmental effects.</li> <li>• It is noted that the responsible authority should provide information supporting this screening decision, sufficient to assess whether protected species are likely to be affected.</li> <li>• It is noted that environmental issues that have not been identified by NE should be raised with local advisers before determining whether an SEA is necessary.</li> <li>• It is noted that NE reserves the right to provide further comments on the environmental assessment of the plan beyond this SEA screening stage if their views on the scoping or environmental report are sought.</li> </ul>

## Assessment 1: Establishing the Need for a Strategic Environmental Assessment of the Worlaby Neighbourhood Plan

Stage	Y/N	Reason
1. Is the Neighbourhood Plan (NP) subject to preparation and/or adoption by a national, regional or local authority, OR prepared by an authority for adoption through a legislative procedure by Parliament or Government? (Art. 2(a)).	<b>Yes</b>	The preparation of neighbourhood plans is subject to the following regulations: The Neighbourhood Planning (General) Regulations 2012 and The Neighbourhood Planning (Referendums) Regulations 2012. The preparation and adoption of the NP is allowed under the Town and Country Planning Act 1990 (as amended by the Localism Act 2011). The NP will be prepared by Brigg Town Council as the 'qualifying body' and will be 'made' by North Lincolnshire Council as the local authority. <b>GO TO STAGE 2</b>
2. Is the NP required by legislative, regulatory or administrative provisions? (Art. 2(a))	<b>No</b>	Whilst the NP is not a requirement and is optional under the provisions of the Town and Country Planning Act 1990 as amended by the Localism Act 2011 it will, if 'made', form part of the Development Plan for North Lincolnshire. It is, therefore, important that the screening process considers whether it is likely to have significant environmental effects and hence whether SEA is required under the Directive. <b>GO TO STAGE 3</b>
3. Is the NP prepared for agriculture, forestry, fisheries, energy, industry, transport, waste management, telecommunications, tourism, town and country planning or land use, AND does it set a framework for future development consent of projects in Annexes I and II to the EIA Directive? (Art. 3.2(a))	<b>Yes</b>	The NP is being prepared for town and country planning and land use and is likely to propose sites for development (e.g. housing or employment uses). As such, the NP contains a framework for future development consent of urban development projects (listed as 10(b) in Annex II of the EIA Directive). Developments which fall under Annex I of the EIA Directive are "excluded" as set out in Section 61k of the Town and Country Planning Act 1990 (as amended by the Localism Act). <b>GO TO STAGE 5</b>
4. Will the NP, in view of its likely effect on sites, require an assessment for future development under Article 6 or 7 of the Habitats Directive? (Art. 3.2(b))		<b>NOT APPLICABLE</b>
5. Does the NP determine the use of small areas at local level OR is it a minor modification of a plan or programme subject to Art. 3.2? (Art. 3.3)	<b>Yes</b>	The NP is expected to propose the development of small sites at a local level. <b>GO TO STAGE 8</b>
6. Does the NP set the framework for future development consent of projects (not just projects in annexes to the EIA Directive)? (Art. 3.4)	<b>Yes</b>	The Neighbourhood Plan will be used to determine future planning applications.

Stage	Y/N	Reason
7. Is the NP's sole purpose to serve the national defence or civil emergency, OR is it a financial or budget plan or programme, OR is it co-financed by structural funds or EAGGF programmes 2000 to 2006/7? (Art. 3.8, 3.9)	No	A NP does not deal with any of these categories of plan.
8. Is it likely to have a significant effect on the environment? (Art 3.5)	Yes	See Assessment 2: Likely significant effects on the environment.

## Assessment 2: Likely Significant Effects on the Environment of the Worlaby Neighbourhood Plan

### Criteria for determining the likely significance of effects on the environment (SEA Screening) of the Brigg Neighbourhood Plan (from Article 3.5 of the SEA Directive):

Significant effect criteria	Assessment
<b>Characteristics of the plans, having regard to:</b>	
The degree to which the Plan sets a framework for projects and other activities, either with regard to the location, nature, size and operating conditions or by allocating resources.	The Worlaby Neighbourhood Plan would, if adopted, form part of the Statutory Development Plan and as such contributes to the framework for future development consent of projects. However, the Plan sits within the wider framework set by the National Planning Policy Framework, the adopted North Lincolnshire Core Strategy 2011 and the adopted Housing & Employment Land Allocations DPD 2016 and the projects for which this Plan helps to set a framework are local in nature and have limited resource implications.
The degree to which the Plan influences other plans and programmes including those in a hierarchy.	The Worlaby Neighbourhood Plan will be in conformity with the National Planning Policy Framework as well as North Lincolnshire Council's strategic policies set out in the adopted North Lincolnshire Core Strategy 2011, the adopted Housing & Employment Land Allocations DPD 2016, and 'saved policies' of the adopted North Lincolnshire Local Plan 2003.

<p>The relevance of the Plan for the integration of environmental considerations in particular with a view to promoting sustainable development.</p>	<p>Although policies are yet to evolve, the Worlaby Neighbourhood Plan contains issues and themes relating to new housing and employment sites, design principles, transport and movement, green links and green space, and community facilities. Any policies that develop will be in conformity with national and local policies as required by the basic conditions. The Neighbourhood Plan will also have to contribute to the achievement of sustainable development to be approved at examination and be 'made' by North Lincolnshire Council.</p> <p>Development would also be subject to policies in the adopted North Lincolnshire Core Strategy 2011, the adopted Housing &amp; Employment Land Allocations DPD 2016, and 'saved policies' of the adopted North Lincolnshire Local Plan 2003 and, therefore, all environmental considerations would be covered by policy.</p> <p>The Plan area lies a considerable distance from the closest European Designated Sites and, therefore, the likelihood that the Plan will include proposals that would have a likely significant effect at such a distance is low.</p>
<p>Environmental problems relevant to the plan or programme; and</p>	<p>The Neighbourhood Plan will include an exercise scoping any local environmental issues so that these can be addressed in the Plan. There are no designated Local Wildlife Sites in the parish and there are no national landscape designations in the parish. There are nine Listed Buildings located in and around the village. The plan area includes a stretch of the River Ancholme; it is noted that there is potential for minor environmental effects should the plan propose development along the watercourse. It is not clear how any housing and/or employment sites to be allocated in the NP will impact on cultural heritage.</p>
<p>The relevance of the Plan or programme for the implementation of Community legislation on the environment (for e.g. plans and programmes linked to waste management or water protection).</p>	<p>The Worlaby Neighbourhood Plan has to be in conformity with the North Lincolnshire Local Development Framework (adopted North Lincolnshire Core Strategy 2011 and the adopted Housing &amp; Employment Land Allocations DPD 2016), and 'saved policies' of the adopted North Lincolnshire Local Plan 2003 which have had regard to EC Legislation.</p>

**Characteristics of the effects and of the area likely to be affected having regard, in particular, to:**

<b>Significant effect criteria</b>	<b>Assessment</b>
<b>Characteristics of the plans, having regard to:</b>	
The probability, duration, frequency and reversibility of the effects.	The Neighbourhood Plan is likely to have modest but enduring positive environmental effects. The effects are not likely to be reversible but will relate to minimal development and will be of a local scale.
The cumulative nature of the effects of the Plan.	It is intended that the positive effects will have cumulative benefits for the area.
The transboundary nature of the effects.	Development in Worlaby is not likely to have an impact on neighbouring authorities or neighbouring parishes.
The risks to human health or the environment (e.g. due to accidents).	The Plan is likely to improve human health by providing a small level of appropriate homes and additional recreational facilities, and by increasing the local and natural built environment. Local green spaces and local green links would be protected and enhanced.
The magnitude and spatial extent of the effects (geographical area and size of the population likely to be affected) of the Plan.	The Neighbourhood Plan relates to the Parish of Worlaby. The magnitude and spatial extent of the effects are likely to be small.
The value and vulnerability of the area likely to be affected due to: special natural characteristics or cultural heritage; exceeded environmental quality standards or limit values; intensive land-use;	It is unlikely that the Plan will have a detrimental effect on natural characteristics or on the cultural heritage of the parish. In considering sites for minimal new infill housing development, affordable housing, or new employment sites it must be demonstrated that the plan has had regard to the significance of any listed buildings in the vicinity and mitigation should be suggested, where appropriate.
The effects on areas or landscapes that have a recognised national, Community or international protection status.	There are no areas or landscapes with recognised national, Community or international protection status within or adjacent to the Neighbourhood Plan Area.



# 5 Habitats Regulations Assessment (HRA) Screening Opinion for the Worlaby Neighbourhood Plan

## Introduction

- 5.1 North Lincolnshire Council is the 'competent authority' under the Conservation of Habitats and Species Regulations 2010 and needs to ensure that the Neighbourhood Plan has been assessed through the Habitat Regulations process. This looks at the potential for significant impacts on nature conservation sites that are of European importance, also referred to as Natura 2000.
- 5.2 This Screening Assessment relates to a Neighbourhood Development Plan that will be in general conformity with the adopted North Lincolnshire Core Strategy 2011, the adopted Housing & Employment Land Allocations DPD 2016, and 'saved policies' of the adopted North Lincolnshire Local Plan 2003. As part of the assessment, North Lincolnshire Council will determine whether the Worlaby Neighbourhood Plan is likely to result in significant impacts on Natura 2000 sites and, therefore, whether an 'Appropriate Assessment' is required.

## Legislative Basis

- 5.3 Article 6(3) of the EU Habitats Directive provides that:

*"Any plan or project not directly connected with or necessary to the management of the [European] site but likely to have a significant effect thereon, either individually or in combination with other plans or projects, shall be subject to appropriate assessment of its implications for the site in view of the site's conservation objectives. In the light of the conclusions of the assessment of the implications for the site and subject to the provisions of paragraph 4, the competent national authorities shall agree to the plan or project only after having ascertained that it will not adversely affect the integrity of the site concerned and, if appropriate, after having obtained the opinion of the general public."*

## Assessment

- 5.4 The Habitats Regulations Assessment Stage 1 Screening of the North Lincolnshire Core Strategy Submission Draft concluded that there is the potential for likely significant effects on the Humber Estuary SAC/SPA/Ramsar site and the Thorne Moor SAC, Hatfield Moor SAC and Thorne and Hatfield Moors SPA 'in combination' with other projects and plans (particularly the two Able UK planning applications for areas within the South Humber Bank Strategic Employment site). Following the review of the Core Strategy DPD Submission Draft it was considered that none of the Policies or the Spatial Objectives in the Plan would lead to likely significant effects on the integrity of the Humber Estuary Natura 2000 sites and Ramsar sites or on the Thorne and Hatfield Moors Natura 2000 sites. It is, therefore, considered that due to the scale and local nature of the Worlaby Neighbourhood Plan it is not likely to result in significant impacts on Natura 2000 sites.

## Conclusions

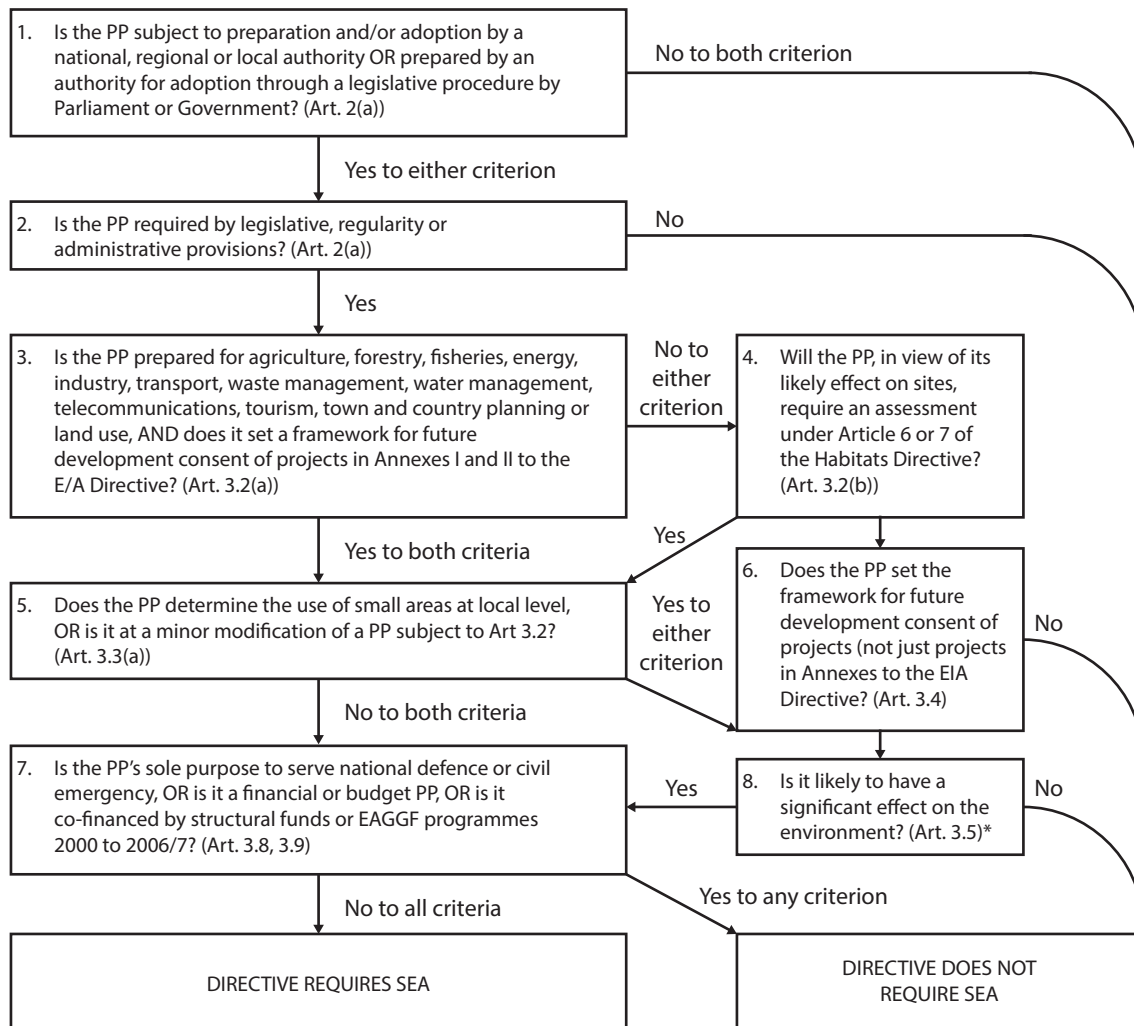
### *Conclusions and Recommendations of the Screening Assessments*

- 5.5 Both the North Lincolnshire Core Strategy and the North Lincolnshire Housing & Employment Land Allocations DPD have been subject to extensive Sustainability Appraisals incorporating Strategic Environmental Assessments. In its present state, very limited new development is proposed over the lifetime of the Worlaby Neighbourhood Plan and, therefore, it is not likely to present significant environmental effects.
- 5.6 The plan is likely to have minimal effects on the local environment depending on whether any sites are allocated for development and how many dwellings are proposed. The results of the assessment will be used to determine if any sites are appropriate to be allocated for development.
- 5.7 The Environment Agency considers that the Plan is unlikely to have significant environmental effects in terms of the issues within their remit, and do not, therefore, request that an SA/SEA is carried out. However, they note that the plan area includes a stretch of the River Ancholme where there is potential for minor environmental effects should the plan propose development along the watercourse.
- 5.8 It is determined that as a result of the screening undertaken by North Lincolnshire Council a Strategic Environmental Assessment **IS REQUIRED** for the Worlaby Neighbourhood Plan. The preparation of a Strategic Environmental Assessment at a level commensurate with the plan is likely to be required since, in the absence of a draft NP, it is not clear how any housing and/or employment sites to be allocated will impact on cultural heritage. It is noted, however, that it may be prudent to screen the draft Plan at a later stage rather than head to scoping (in line with Historic England advice).
- 5.9 This will provide evidence that the Plan has been prepared with sustainability at the forefront. Any sites that are presented will have been assessed and considered.
- 5.10 This conclusion has been based on the following:
- i* The Screening Opinion Assessments demonstrate that SEA is necessary;
  - ii* To provide evidence and justification that the Worlaby Neighbourhood Plan has evolved with sustainability at the forefront of its preparation, a key consideration in the National Planning Policy Framework.

- 5.11 This screening opinion was undertaken at a 'snapshot' in time as the neighbourhood plan is developing. As this Screening opinion concludes that SEA is required it will be necessary to prepare an SEA Scoping Report for the Worlaby Neighbourhood Plan in its present form.
- 5.12 The Worlaby Neighbourhood Plan is not likely to result in significant impacts on Natura 2000 sites and, therefore, an Appropriate Assessment **IS NOT REQUIRED.**
- 5.13 This conclusion has been reached based on the following:
- i* Proposals within the Plan will not adversely affect any internationally designated wildlife sites.
- 5.14 There are no Special Areas of Conservation in or adjacent to the Worlaby Neighbourhood Plan Area and, due to the location of the parish and the local nature of proposals in the Plan, it will not impact on internationally designated wildlife sites.

# 6 Appendices

## Appendix 1 - Key steps of the Neighbourhood Plan SEA Screening Process:

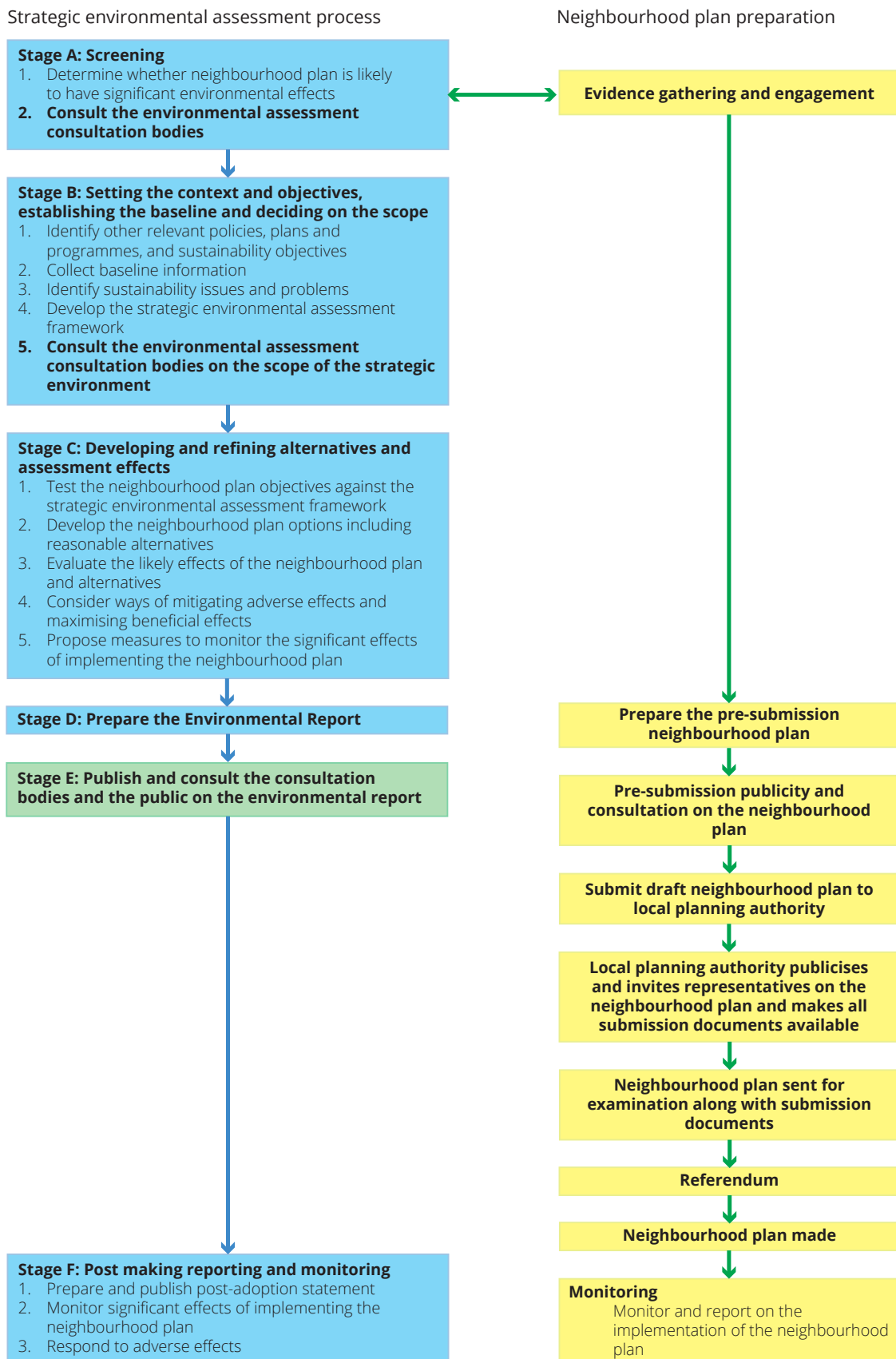


\* The Directive requires Member States to determine whether plans or programmes in this category are likely to have significant environmental effects. These determinations may be made on a case by case basis and/or by specifying types of plan or programme.

### NOTE:

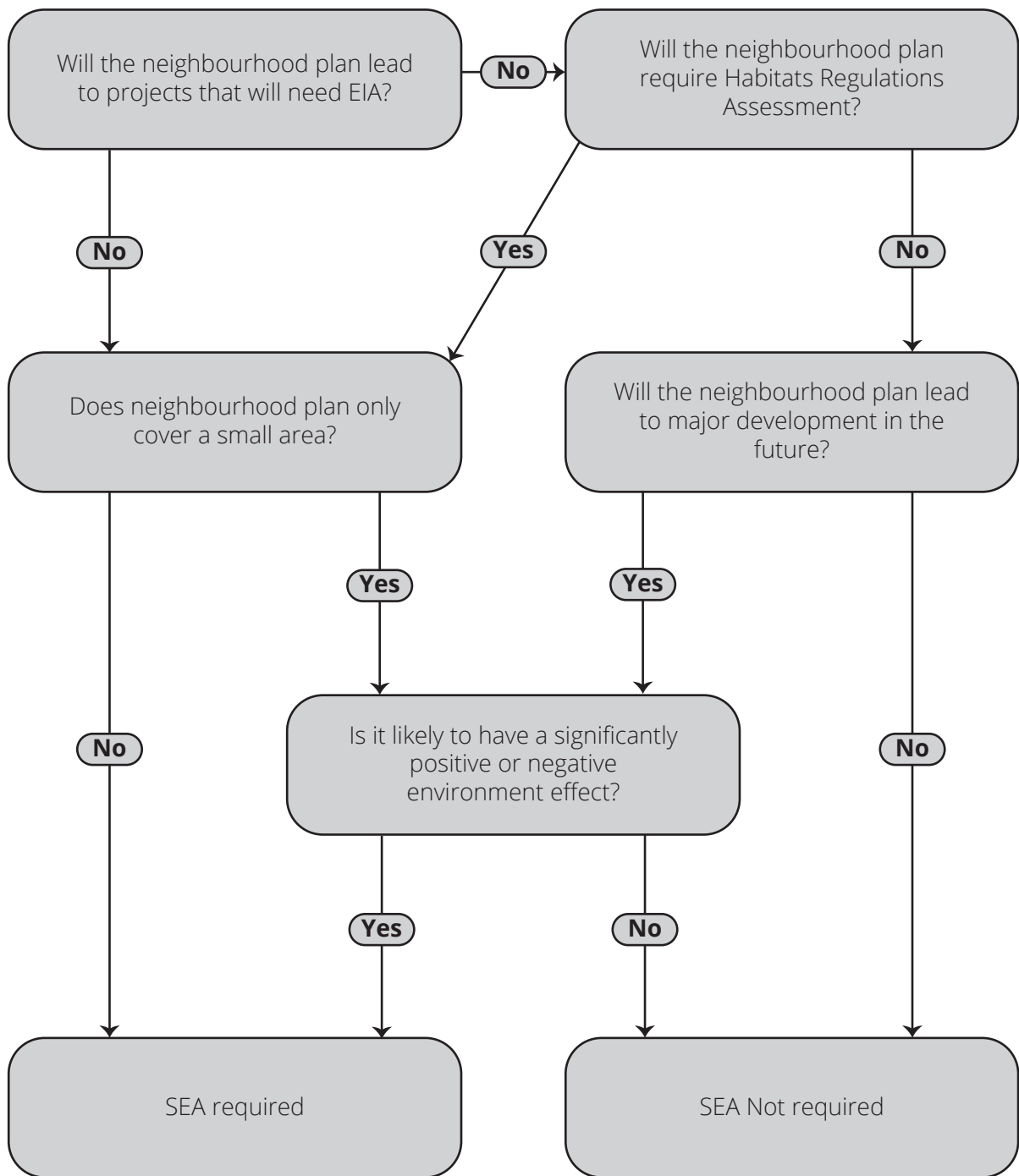
**This diagram is intended as a guide to the criteria for application of the Directive to plans and programmes (PPs). It has no legal status.**

## Appendix 2 - Strategic Environmental Assessment process:



Appendix 3 - Government guidance 'A practical guide to the Strategic Environmental Assessment Directive' sets out the following approach to be taken in determining whether SEA is required:

DIAGRAM 1: KEY STEPS OF THE NEIGHBOURHOOD PLAN SEA SCREENING PROCESS



## Appendix 4 - Consultation Comments Received from Statutory Bodies:

### 1) Environment Agency (letter):

Mr Dave Lofts  
North Lincolnshire Council  
Development Control  
Civic Centre Ashby Road  
Scunthorpe  
DN16 1AB

Our ref: AN/2017/126534/SE-01/SC1  
Date: 27 November 2017

Dear Dave,

Worlaby Neighbourhood Plan SA/SEA Screening Report

Thank you for inviting our comments on the above Screening Report.

Based on the information available at this time, we consider that the Worlaby Neighbourhood Plan is unlikely to have significant environmental effects in terms of the issues within our remit. We therefore do not wish to request that an SA/SEA is carried out.

The plan area includes a stretch of the River Ancholme; there is potential for minor environmental effects should the plan propose development along the watercourse.

Should you require any additional information, or wish to discuss these matters further, please do not hesitate to contact me on the number below.

Yours sincerely

Nicola Farr,

Sustainable Places - Planning Advisor  
Direct dial 02030 255023  
Direct e-mail [nicola.farr@environment-agency.gov.uk](mailto:nicola.farr@environment-agency.gov.uk)  
Environment Agency Waterside House Waterside North, Lincoln, Lincolnshire, LN2 5HA. Customer services line: 03708 506 506 [www.gov.uk/environment-agency](http://www.gov.uk/environment-agency)



## 2) Historic England (letter):

Mr Dave Lofts  
North Lincolnshire Council  
Civic Centre  
Ashby Road  
Scunthorpe  
North Lincolnshire  
DN16 1AB

Our ref: PL00210762  
Date: 27 November 2017

Dear Mr Lofts,

Worlaby Neighbourhood Plan - SEA Screening Request

Thank you for your email of 3 November 2017 in relation to the above project.

For the purposes of consultation on SEA Screening Opinions, Historic England confines its advice to the question, "Is it likely to have a significant effect on the environment?" in respect of our area of concern, cultural heritage. Our comments are based on the information supplied with the screening request.

On the basis of the information supplied and in the context of the criteria set out in Schedule I of the Environmental Assessment Regulations [Annex II of 'SEA' Directive], Historic England is of the view that the preparation of a Strategic Environmental Assessment, at a level commensurate with the plan, is likely to be required since, in the absence of a draft NP, it is not clear how any housing and/or employment sites to be allocated in the NP will impact on cultural heritage.

Essentially, in the absence of a draft NP, including policies and site allocation information, it is not clear how any impact has been assessed in respect of heritage assets, designated or non-designated, including potential non-designated heritage assets of archaeological interest.

The views of the other statutory consultation bodies should be taken into account before the overall decision on the need for a SEA is made. If a decision is made to undertake SEA, please note that Historic England has published guidance on Sustainability Appraisal/Strategic Environmental Assessment and the Historic Environment that is relevant to both local and neighbourhood planning and available at

[https://content.historicengland.org.uk/images-books/publications/strategic-environ-assessment-sustainability-appraisal-historic-environment/SA\\_SEA\\_final.pdf/](https://content.historicengland.org.uk/images-books/publications/strategic-environ-assessment-sustainability-appraisal-historic-environment/SA_SEA_final.pdf/)

Should it be agreed that SEA is required Historic England would be pleased to input to scoping parameters as part of a further consultation. We also have guidance on site assessment methodology which may be of use to the Worlaby NP team and Parish Council:

<https://historicengland.org.uk/images-books/publications/historic-environment-and-site-allocations-in-local-plans/>

Depending on the scale and location of any allocation sites, it may be prudent to screen the draft NP itself at a later stage rather than head to scoping. Clearly that would be an issue for the Worlaby NP group to consider and make a decision on, but it is suggested here as an alternative option.

I hope that this information is of use at this time.

Yours sincerely,

Rosamund Worrall,

Historic Environment Planning Adviser,  
Rosamund.Worrall@HistoricEngland.org.uk

### 3) Natural England (email):

Plan Cons Area Team (Yorkshire & Northern Lincolnshire) (NE)  
PlanConsAreaTeamYorkshire&NorthernLincolnshire@defra.gsi.gov.uk

Mon 04/12/2017 11:13

Worlaby Neighbourhood Plan Strategic Environmental Assessment Screening Report

Hi Dave,

Apologies for the delay in getting back to you. Natural England broadly concurs with the conclusions of the assessment, based on the information provided. However, we note that plan is at an early stage and that the precise nature of the proposals in the plan are not yet clear. Should significant proposals come forward in a future version of the plan then we may revise our advice that the plan is unlikely to have significant environmental effects insofar as our strategic environmental interests (including but not limited to statutory designated sites, landscapes and protected species, geology and soils) are concerned.

We are not aware of significant populations of protected species which are likely to be affected by the policies or proposals within the plan. It remains the case, however, that the responsible authority should provide information supporting this screening decision, sufficient to assess whether protected species are likely to be affected.

Notwithstanding this advice, Natural England does not routinely maintain locally specific data on all potential environmental assets. As a result the responsible authority should raise environmental issues that we have not identified on local or national biodiversity action plan species and/or habitats, local wildlife sites or local landscape character, with its own ecological and/or landscape advisers, local record centre, recording society or wildlife body on the local landscape and biodiversity receptors that may be affected by this plan, before determining whether an SEA is necessary.

Please note that Natural England reserves the right to provide further comments on the environmental assessment of the plan beyond this SEA screening stage, should the responsible authority seek our views on the scoping or environmental report stages. This includes any third party appeal against any screening decision you may make.

Yours sincerely,

Merlin Ash,

Lead Adviser,  
Sustainable Development and Marine,  
Yorkshire and Northern Lincolnshire.



[www.northlincs.gov.uk](http://www.northlincs.gov.uk)